



# Spring Academy

“we plant seeds that Spring to life...”



Ages 2 & 3 years

# N.E.S.T.

(Nurturing Environment Specialized for Toddlers)

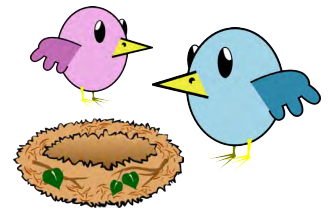
*The objectives of the N.E.S.T. program are to assist children as they fulfill the basic human tasks of trust, separation, independence and self-control. Children need to know that they are safe, both physically and emotionally and that they are loved for who they are.*

In the N.E.S.T. environment, the child develops feelings of support, security, and self-esteem. Children are guided toward appropriate behaviors through a nurturing atmosphere that offers consistency; children come to understand the balance between freedom and limits. Most children quickly adjust to the environment. Nature assists by offering the child an insatiable curiosity and a boundless enthusiasm for activity. Out of this newly discovered freedom of movement, there eventually comes a flourishing of concentration on an enticing activity. Patience, self-control, and respect of peers emerge as children participate in community life. The focus is both on curriculum and materials and on helping the child respond to the rapid changes of this developmental age. The children will engage in hands-on activities (practical life), art and music, beginning literacy, math concepts, exploration and science, culture, and physical development.

The goal of the N.E.S.T. environment is to cultivate a child's own natural desire to learn. We do this by encouraging children to experience choice and decision making, which empower them with intrinsic motivation and self-discipline and strengthen their ability to think and act for themselves. We guide each child to "do it by myself", thus fulfilling the child's basic need for independence. Additionally, by helping children believe that they are capable, competent and confident, we help create positive attitudes toward learning that last a lifetime.



## Practical Life



The practical life activities contribute to the development of both small and large motor skills of the child. Children at this age gain strength in their hands by doing simple activities such as playing with play-dough, pouring, sifting, scooping, sorting, stringing beads, fitting blocks together, and coloring. The exercises and materials are also designed to assist the child in becoming self-efficient and independent. The activities provide an opportunity for the children to learn to care for themselves, others, and their environment.

## Language & Literacy

Language and literacy is incorporated into every activity throughout the day. The most important language materials for our students are the materials and experiences in the child's environment. Reinforcing the importance of verbal communication, speaking clearly, and supporting the child's expanding vocabulary are a daily process in the classroom environment.

## Math Foundations

As young children explore their environment, they are beginning to notice relationships that are the foundations for our math curriculum. They are beginning to recognize numbers, counting items, and understanding the relationship between a numeral and a set of objects. They begin to recognize basic geometric shapes such as circle, square, triangle etc., and understand terms such as big/little, short/tall, more/less, top/middle/bottom, above/below, etc. The child starts to appreciate the practical uses of numbers seen around him/her every day, e.g. clocks, calendars, money, etc. They begin to sort and match objects, arrange things in simple patterns, and identify similarities and differences between items. They begin to understand that math is fun!

## Science

Our science program includes activities where the child can directly observe and manipulate physical properties. When children can manipulate materials and equipment and discover on their own, they feel a great sense of mastery and positive satisfaction which helps build their self-concepts. Our program will help your child develop an awareness and respect of the natural environment, encourage observation skills, and develop an awareness of their bodies.

## Art

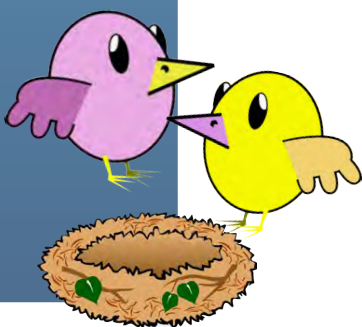
Art is a way of expressing the creativity that every child is born with. Art projects will primarily focus on process rather than product. Some art projects will be used to teach concepts that coincide with teaching goals, as well as to improve fine motor skills such as holding a marker or cutting. These activities will promote your child's growing ability to focus. Some projects are open-ended, with various resources available for children to explore. Our music program is designed to include music, movement, story, and the exploration of instruments. Children naturally communicate through sound. Singing, speaking, movement, and dancing are all integral parts of the classroom.

## Culture

At Spring Bilingual Academy we strive to give our students the opportunity to explore the larger world. As part of a rich exploration of the different cultures of the world, children will learn about the people, terrain, and animals of each continent. Teaching our students about world cultures helps them appreciate the differences in people and their traditions.

## Physical Development

Our teachers encourage the growth and development of your child's gross motor skills. Our program is designed to encourage and explore movement. Movement is fun and an important part of your child's growth and development. Children are also encouraged to demonstrate safe behaviors while participating in activities and playing on the playground.



## Frequently Asked Questions

### **What types of programs do you provide?**

We have Half Day, Full Day and 3days/week programs. Please refer to the tuition sheet for more information on fees and program times.

### **What is your student/teacher ratio?**

Our class sizes are small. We have a student/teacher ratio of 6:1

### **What kind of qualifications do your teachers hold?**

Our experienced staff meets and exceeds all Maryland State requirements and are mindful practitioners of their vocation. Each year they participate in both in-service training and additional educational opportunities to meet all MSDE continuing education requirements.

### **How is the N.E.S.T. classroom set up?**

The N.E.S.T. program has it's own entire floor. We have designed the floor specifically for this age group. The classroom is very spacious and all of the materials are safe, stimulating, and age appropriate.

### **Does my child need to be potty trained to be enrolled?**

No, we do not require that children be potty-trained. One of the aspects of the program is the development of bathroom skills.

### **Can I visit the school and observe the class and teacher?**

We encourage you and your child to visit us and explore the N.E.S.T. program. Please email us or call to arrange a suitable day. Also, our open houses provide a great opportunity to meet the teacher and other parents currently enrolled.

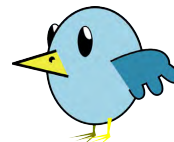
### **Do you encourage parent involvement in the school?**

We encourage parent involvement through conferences, observations, discussions, special events, etc. We feel that parent involvement and communication creates a better learning environment, and helps in the understanding of how your child is progressing

### **Will my child be able to enroll in the school's Montessori Program?**

Yes, the next step for your child will be our Bilingual Montessori Program.

Please let us know if you have any additional questions!



# Spring Bilingual Montessori Academy

3514 Plyers Mill Road  
Kensington, MD 20895

[www.spring-bilingual.org](http://www.spring-bilingual.org)

301.962.7262



# Spring Bilingual Montessori Academy

3514 Plyers Mill Rd. Kensington, MD 20895 301.962.7262

## THE NEST PROGRAMS AGES 2 & 3 YEARS



### TUITION AND FEE SCHEDULE 2012-2013

#### HALF-DAY

9:00 to 12:00

<i>Annual:</i>	\$9,300	= \$500 deposit + \$8,800 Aug. 1
<i>Semester:</i>	\$9,400	= \$500 deposit + \$4,450 Aug. 1 & Jan. 1
<i>Monthly:</i>	\$9,600	= \$500 deposit + 10 installments of \$910

#### FULL DAY (3 DAYS/WEEK) (TUESDAY, WEDNESDAY, THURSDAY)

9:00 to 3:15

<i>Annual:</i>	\$10,600	= \$500 deposit + \$10,100 Aug. 1
<i>Semester:</i>	\$10,700	= \$500 deposit + \$5,100 Aug. 1 & Jan. 1
<i>Monthly:</i>	\$10,900	= \$500 deposit + 10 installments of \$1,040

#### FULL DAY (5 DAYS/WEEK)

9:00 to 3:15

<i>Annual:</i>	\$12,100	= \$500 deposit + \$11,600 Aug. 1
<i>Semester:</i>	\$12,200	= \$500 deposit + \$5,850 Aug. 1 & Jan. 1
<i>Monthly:</i>	\$12,400	= \$500 deposit + 10 installments of \$1,190

**EXTRA-CARE AND FEE SCHEDULE AND POLICIES**

**EXTRA CARE AFTER SCHOOL**

**3 to 5 pm**

*Supervised play for children who must arrive before or be picked up after school hours.*

- Extra-care can be reserved and paid in advance, either monthly or by semester, or paid by the hour. (See table below.)
- Drop-in care is offered on a space-available basis.
- *Semester payments* are due on the first of August and January. *Monthly payments* are due the first of each month from August through May (= 10 payments). *Hourly* charge is per hour or part hour after a 10-minute grace period. Hourly fees are posted at the end of the month and due by the 5th of the month following.
- *Late pickups* after 5:00 pm are \$1 per minute for the first half-hour and \$5 per minute after 5:30pm. Also, after the fifth time late - \$5 per minute, payable directly to the person in charge that day, at the time of pickup.

	<u>Semester</u>	<u>Monthly</u>	<u>Hourly</u>
3:00 to 4:00pm	865.00	175.00	9.50
3:00 to 5:00pm	1,620.00	340.00	9.50

**FEES**

<b>Application fee</b>	\$50	One-time only with application for enrollment. Non-refundable unless there is no chance for placement.
<b>Snack fee</b>	\$50/semester	Optional fee in lieu of providing snack to the class.
<b>Late fee</b>	3%	A <b>3%</b> finance charge will be assessed to all accounts 30 days past due date.  This charge will accrue monthly until <b>all</b> payments are made.
<b>Returned check fee</b>	\$40	Assessed on checks returned by the bank for NSF. Please note: Following a returned check, subsequent payments will be accepted only by money order, certified check or cash.

- Quoted rates are for the entire school year (September through mid-June as set in school Calendar).
- Late admissions will be prorated according to date of admission. Please inquire for specific prorata schedule.
- The deposit indicated is non-refundable and due with a contract upon acceptance to the school.
- The balance may be paid in your choice of payment plans:
  - (1) *Annual*: in full by Aug. 1
  - (2) *Semester*: in two equal semester installments Aug. 1 and Jan. 1; or
  - (3) *Monthly*: spread out over ten installments, due on the first of each month from August through May.
- A *Sibling Discount* of 10% applies to tuition or Extra-Care of the second (or more) child in the same family simultaneously enrolled in Spring BMA.
- Snack is provided by parents approximately once per month, on a rotating basis according to the monthly menu. See Fees schedule for snack payment option.